

Aquantia USB Dongle AQC111U: Windows Driver Installation Procedure

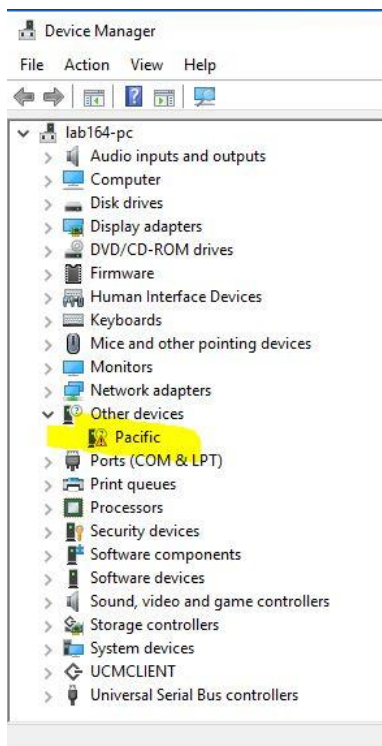
The Aquantia's USB Dongle (AQC111U) requires the Software Driver from Aquantia for its operation. There is also a Diagnostic program which can be used to update the FW or to test the device. The Diagnostic program is not required for the normal operation of the device.

The Driver supports Windows 10, 8, 7. This document contains following procedures for the USB Dongle:

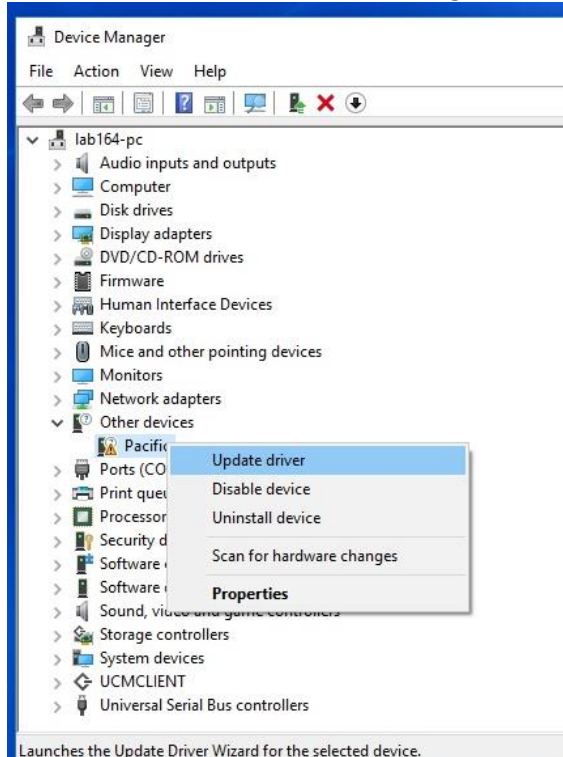
- Procedure to install the Drivers for Windows

Steps:

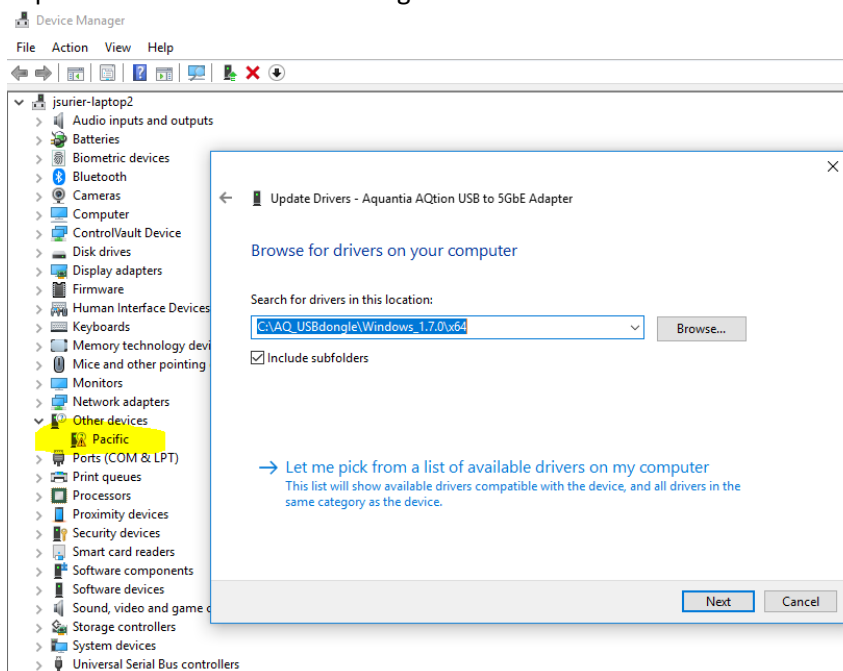
1. Download the latest Driver files from Aquantia's Portal / Website (<https://portal.aquantia.com/>). Copy the file to your Windows computer and unzip the file to a location of your choice.
2. Connect the USB dongle to the Windows computer.
3. Start the Device Manager by entering "Device Manager" at the Start Menu.
4. Ensure the Device Manager displays the dongle as Pacific under "Other devices". If the dongle is not detected by the Windows, it will not be listed in the Device Manager. Please check the cables and the dongle.



5. Move the mouse to the Device Manager and Right click the mouse on the “Pacific”

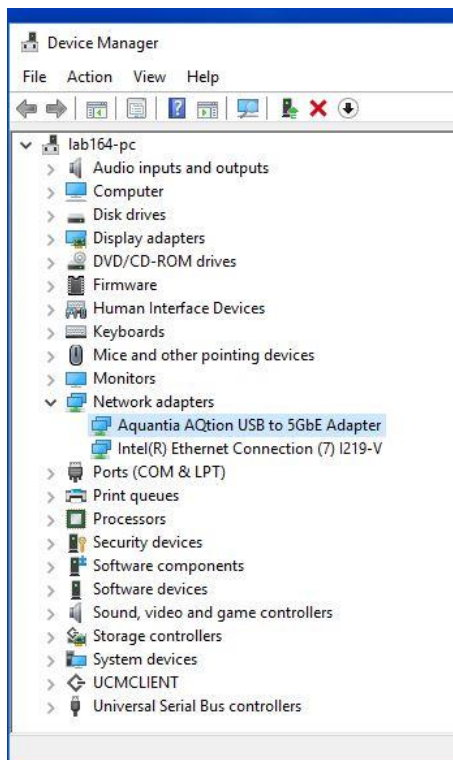


6. Select “Browse my computer for driver software” option and select the path where you have copied the Driver file for the dongle:

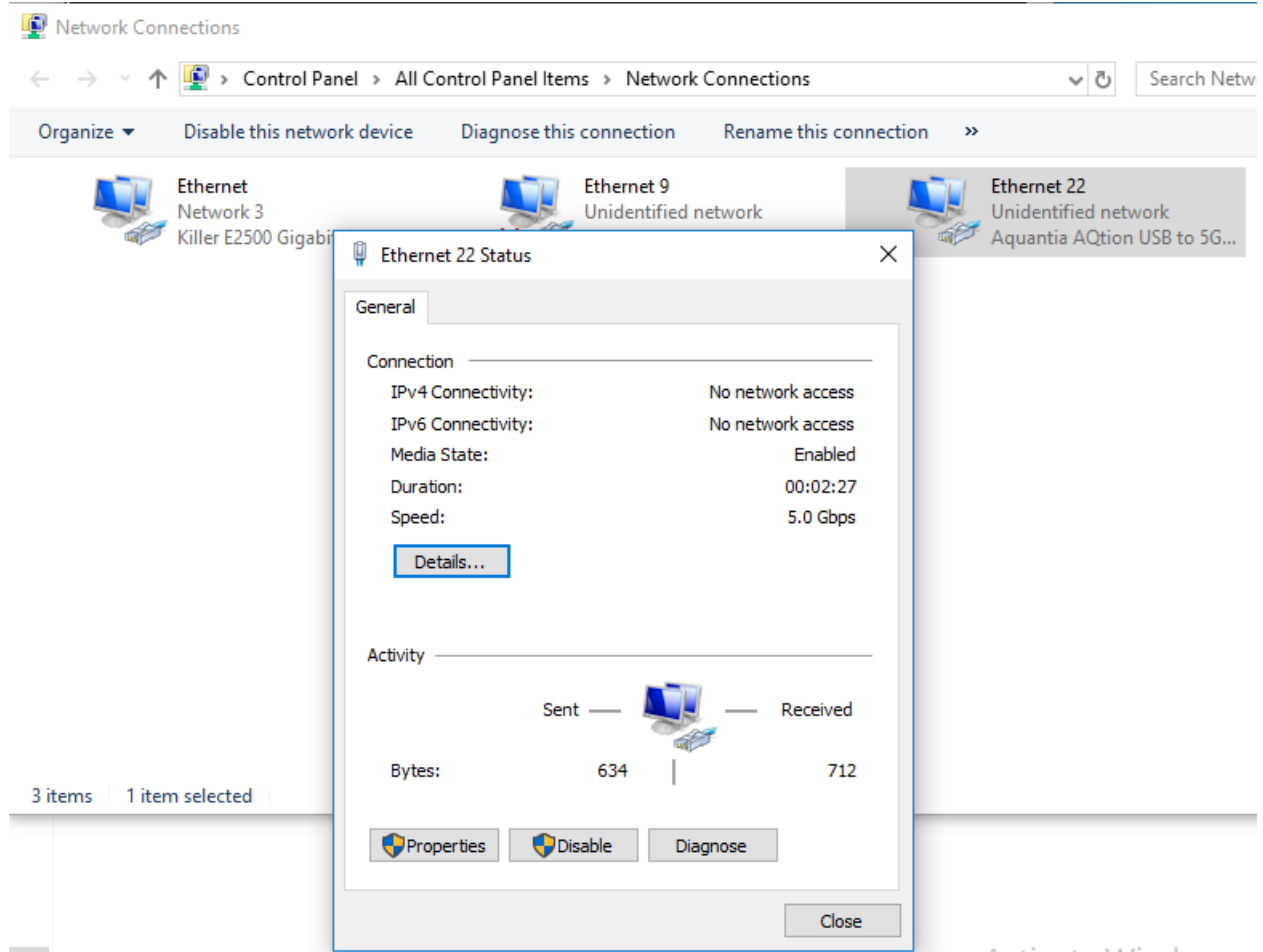


Make sure to choose the right Windows Driver depending on the version of your Windows OS.
Make sure you have already unzipped the Driver file.

7. If the installation is successful, the dongle will dynamically show up in the Device Manager under “Network adapters” as “Aquantia AQtion USB to 5GbE Adapter” as shown below:



8. If the device doesn't appear under Network Adapters, please double check your cable, connection, and the installation of the driver.
9. Connect the Ethernet cable to the dongle and your network should be up and running by now.
10. Enter "ncpa.cpl" in the Start menu and double click on the network connection representing the dongle and you should see the network connection, speed etc. as shown below:



NOTE:

Diag, FW, Driver etc. often gets updated, please check the website.