

Release Details

- Driver: Intel NPU (Neural Processing Unit) Driver – Windows*
- Driver Version: 32.0.100.2540
- Date: 06/21/2024

Notes

- Support for OpenVino 2024.1
- Platform support: Meteor Lake.
- The name displayed for the NPU device in Microsoft Windows® Device Manager and Task Manager is aligned with the NPU brand name: Intel® AI Boost.

Fixed Issues

- Enable Whisper Model on Microsoft DML (Device Modeling Language).
- Enabled four Meitu Winkstudio models: Intseg_refine, Value_encoder, VideoSkin VideoBody.
- Fixed VTG segnet model performance on NPU.
- Fixed SD1.5 FP16 model compilation issue on MTL NPU.
- Enabled Huya OCR detection and recognition models.
- Fixed IMD performance regressions for two Xuanmi models.

Known Issues

- No known issues.

Supported Platform

- Meteor Lake (Intel® Core™ Ultra processors)

Operating System Support

Operating System	Version	Details
Microsoft Windows® 11 64-bit	September Update (22H2)	
	October Update (22H2)	
	October Update (23H2)	

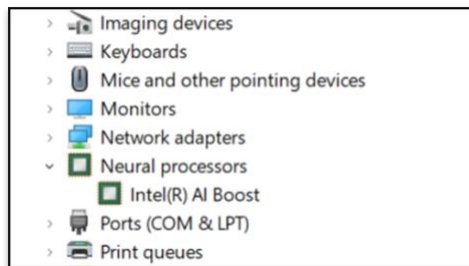
NOTE: NPU will not support workloads on Windows* 10. Disable the NPU device from BIOS for Windows 10.

AI Frameworks Support

Framework	Version
OpenVino	OpenVino 2024.1
DirectML	Preview

How to Install / Update the NPU Driver

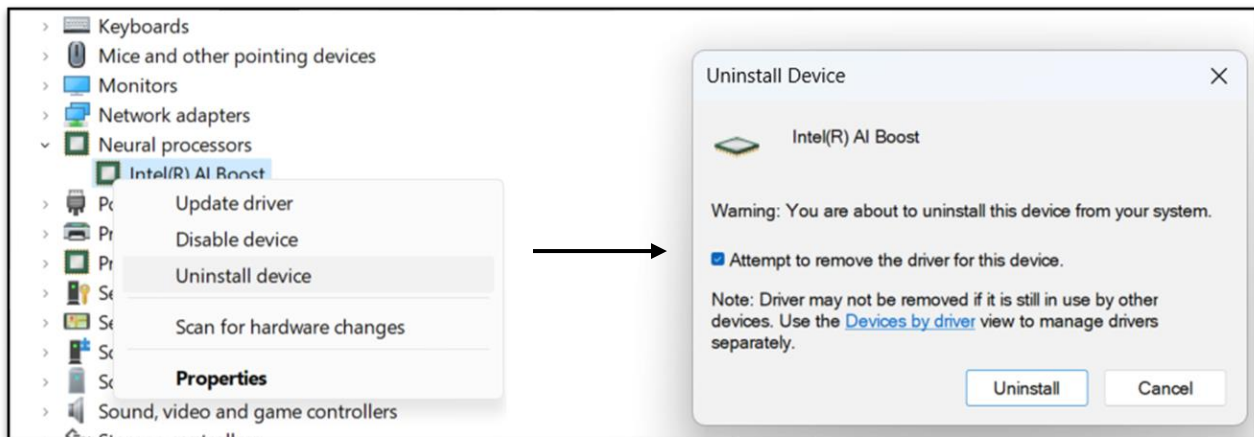
1. **Check if an NPU driver is already installed on your device.** Right click on Windows start button and select *Device Manager*. Check if *Intel(R) AI Boost* is visible under *Neural processors*.



2. **If an NPU driver is installed, you need to uninstall it.**

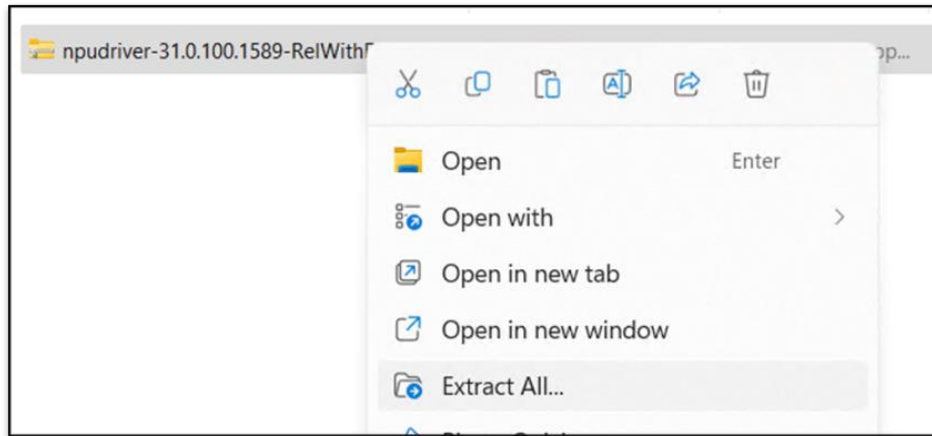
In *Device Manager* window:


- a. Right click on the *Intel(R) AI Boost* and select *Uninstall Device*.
- b. When the *Uninstall Device* window appears, select the *Attempt to remove the driver for this device* checkbox and click on the *Uninstall* button.



3. Once the device is uninstalled, it's time to **install the new driver version**.
Download latest NPU driver from Intel Download Center.
4. **Unpack the zip driver package downloaded from Intel Download Center.** To unpack the .zip driver file, right click the file and Extract All -> Extract.

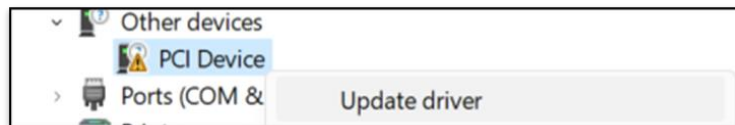
Intel NPU Driver – Release Notes



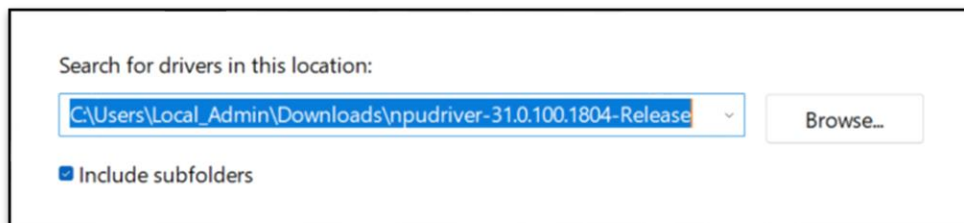
5. Go to *Device Manager* and *Scan for Hardware Changes*, by clicking on  icon located at the top menu. This will reveal “*Other devices*”.

Note: If you click more than once on icon the other devices may disappear and revert to show Intel(R) AI Boost.

6. **Install the new NPU driver.** Find *PCI Device* under *Other devices*. Right click it and select *Update Driver*.



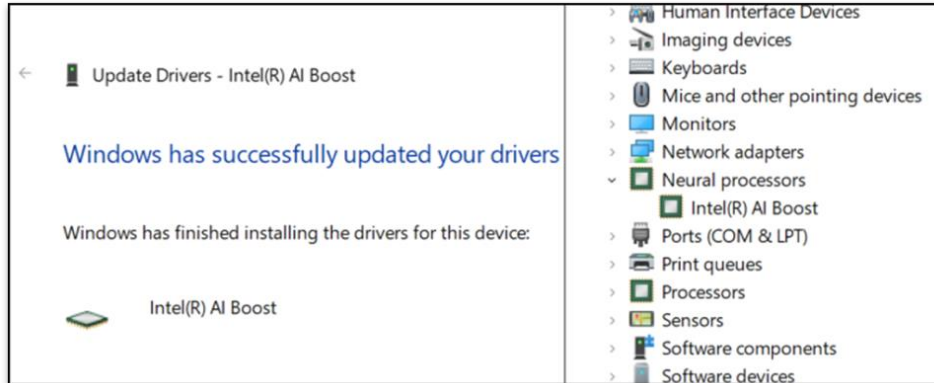
7. In the new Windows that appears, click *Browse my computer for drivers*. Click on *Browse* button and navigate to the location where the unpacked driver was saved.



8. After setting the correct location tick the **Include Subfolders** checkbox and click Next. The driver will now install.

Intel NPU Driver – Release Notes

9. If the driver installed correctly, you should see the following window saying, “Windows has successfully updated your drivers” and the Device Manager should display your *Intel(R) AI Boost* driver under *Neural processors*.



Note: For issues with manual installation, please contact [Intel support](#).

More on Intel Products

For more information on Intel Processors, Graphics and other devices, please visit:

- [Intel® Core™ Processors - View Latest Generation Core Processors](#)
- [Intel® Processors for PC, Laptops, Servers, and AI | Intel®](#)
- [Intel® Arc™ Graphics Overview](#)
- [Intel® Graphics Solutions](#)

Notices & Disclaimers

© Intel Corporation. Intel, the Intel logo, and other Intel marks are trademarks of Intel Corporation or its subsidiaries.

Other names and brands may be claimed as the property of others.
