

ASM105x Series MP Tool User Manual

Rev: 1.7

Copyright Notice:

Copyright © 2008, ASMedia TECHNOLOGY INC. All Rights Reserved.

INFORMATION IN THIS DOCUMENT IS PROVIDED IN CONNECTION WITH PRODUCTS OF ASMEDIA TECHNOLOGY INC. NO LICENSE, EXPRESS OR IMPLIED, BY ESTOPPEL OR OTHERWISE, TO ANY INTELLECTUAL PROPERTY RIGHTS IS GRANTED BY THIS DOCUMENT. EXCEPT AS PROVIDED IN ASMEDIA'S TERMS AND CONDITIONS OF SALE FOR SUCH PRODUCTS, ASMEDIA ASSUMES NO LIABILITY

WHATSOEVER, AND ASMEDIA DISCLAIMS ANY EXPRESS OR IMPLIED WARRANTY, RELATING TO SALE AND/OR USE OF ASMEDIA PRODUCTS INCLUDING LIABILITY OR WARRANTIES RELATING TO FITNESS FOR A PARTICULAR PURPOSE, MERCHANTABILITY, OR INFRINGEMENT OF ANY PATENT, COPYRIGHT OR OTHER INTELLECTUAL PROPERTY RIGHT.

Products of ASMEDIA TECHNOLOGY INC. are not intended for use in medical, life saving, life sustaining, critical control or safety systems, or in nuclear facility applications.

ASMedia may make changes to specifications and product descriptions at any time, without notice.

ASMedia TECHNOLOGY INC. may have patents or pending patent applications, trademarks, copyrights, or other intellectual property rights that relate to the presented subject matter. The furnishing of documents and other materials and information does not provide any license, express or implied, by estoppel or otherwise, to any such patents, trademarks, copyrights, or other intellectual property rights.

Contact your local ASMedia sales office or your agent to obtain the latest specifications and before placing your product order.

Copies of documents which have an order number and are referenced in this document, or other ASMedia literature may be obtained by calling +886-2-22196088 or by visiting ASMedia's website at www.asmedia.com.tw.

ASMedia and ASMedia logo are trademarks or registered trademarks of ASMedia TECHNOLOGY INC. in Taiwan and other countries.

© 2008 祥碩科技股份有限公司，著作權所有，並保留一切權利

本文資料為與祥碩科技股份有限公司之產品相關。本文並未明示或默示授權任何智慧財產權予第三人。除在祥碩科技股份有限公司對該產品提供的買賣條款及條件以外，祥碩科技股份有限公司免於擔負任何責任，且不對產品的買賣及使用做任何明示或默示的保證，包含產品適於特殊使用目的、以及產品不侵害任何專利權、著作權或其他智慧財產權。祥碩科技股份有限公司之產品不用於醫療的、救助生命的、生命維持的、安全控管系統或核子設施等用途之上。

祥碩科技股份有限公司可隨時不經通知，逕行增訂或修改產品規格及描述。

本文之相關專利權、申請中之專利權、商標權、著作權及其餘智慧財產權均屬祥碩科技股份有限公司所有。本文及其他資訊並未明示或默示的提供任何專利、商標、著作權及其餘智慧財產權之授權。

請於下產品訂單前先聯絡當地的祥碩科技銷售處或代理商以取得最新的產品規格書。

本文提及之有訂單號碼之文件或其他詳細資料可參閱祥碩科技網站www.asmedia.com.tw或撥打+886-2-22196088

ASMEDIA 和 ASMEDIA 商標均為祥碩科技股份有限公司在台灣和其他國家的註冊商標或商標。

Office:

ASMedia Technology, Inc.

6F, No.115, Minquan Rd., Xindian City, Taipei County 231, Taiwan, R.O.C.

<http://www.asmedia.com.tw>

Tel: 886-2-2219-6088

Fax: 886-2-2219-6080



Environmentally hazardous materials are not used in this product.

Revision History

Rev.	Date	Description
1.7	Aug 25, 2021	Update operation procedure
1.6	Jan 17, 2020	Update UI and configurations with MP Tool v3.7.1.5
1.5	Aug 31, 2016	Update UI and configurations with MP Tool v3.6.0.0
1.4	Nov 27, 2014	Update UI and configurations with MP Tool v2.1.22.1
1.3	June 11, 2012	Add HDDSN/WHCK/HDDPC description.
1.2	May 02, 2012	Update UI and configurations with MP Tool v2.01.
1.1	June 02, 2011	Add more configurations and preload file.
1.0	Mar 12, 2010	Formal release
0.4	Mar 11, 2010	Update description
0.3	Mar 09, 2010	Feature description update.
0.2	Mar 08, 2010	Revision Update
0.1	Feb 11, 2010	Initial Release

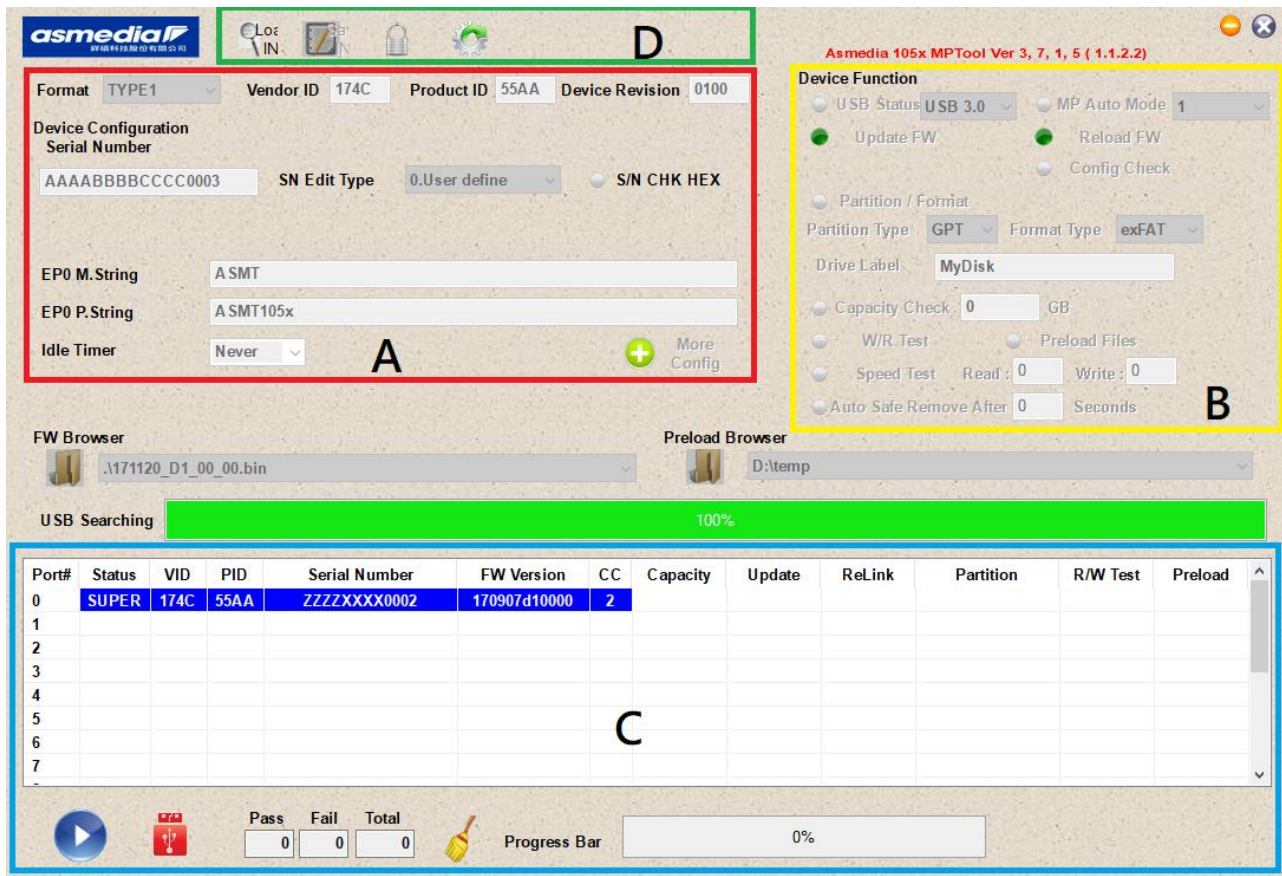
Scope:

Customers can easily manufacture Asmedia's ASM105x related products.

Operation environment:

Win XP / Win7 / Win8 / Win10.

MP Tool Interface Overview



MP tool have 4 major function areas.

Area A: Configure device information.

Area B: Select device function test items.

Area C: Show the test status and results.

Area D: Switch configures mode or un-configures mode and save/load ini file.

Area A: Device Configuration and Device Firmware

1. Vendor ID, Product ID and Device Revision:

You can type 4 characters. ("0"~"9" and "A"~"F")

2. Serial Number :

You can type 16~20 characters. ("0"~"9" and "A"~"F")

2-1. Drop-down menu:

2-1-0. User define:

The serial number is what you type

2-1-1. Increase HEX:

The serial number will be auto increased by Hex

2-1-2. Increase DEC:

The serial number will be auto increased by Dec

2-1-3. From Barcode:

input serial number by barcode scanner. There is a limitation is that it is only support one device operation. When device plug in, MP tool will pop up a edit box and wait serial number input from barcode scanner

2-1-4. From HDD SN:

MP tool will use HDD's serial number as device's serial number

2-2. S/N CHK HEX:

The radio is a function that MPTool will check S/N number is valid or not.

3. Manufacturer String and Product String (EP0 M.String and EP0 P.String):

All characters are allowed.

4. Device Firmware:

The FW directory must be selected if update FW in area B is checked.

The Preload path must be selected if preload file in area B is checked.

5. Idle Timer:

It allows user to select idle timer to trigger the function of HDD standby.

Please refer to

6. More Config:



6-1. Customized String:

The radio is a function that the T10 Manufactory string and Product string will the same as EP0 Manufactory string and Product string

6-2. HDD SlowEnumeration:

The radio is a function that it is will link USB after SATA device detected.

6-3. Dual Image:

The radio is a function that writing FW image to SPI flash bank 0 or 1 or both, this function need FW support and SIP flash size must above 1M.

Area B: Device Function

Device Function

☐ USB Status **USB 3.0** ☐ MP Auto Mode **1**

☒ Update FW ☒ Reload FW

☐ Config Check

☐ Partition / Format

Partition Type **GPT** Format Type **NTFS**

Drive Label **MyDisk**

☐ Capacity Check **0** GB

☐ W/R Test ☐ Preload Files

☐ Speed Test Read : **00** Write : **50**

☐ Auto Safe Remove After **0** Seconds

1. USB Status:

Check device status.

2. MP Auto Mode:

MP Auto Mode, support maximum 16 devices.

3. Update FW:

Update new firmware and configuration setting.

4. Reload FW:

Reload new firmware and new configuration.

5. Config Check:

Check device's PID、VID、Manufacture string、Product String, and Serial number are same with MP tool's setting.

6. Format Type:

You can select format type **NTFS**、**FAT32** or **EXFAT**

Drive Label support **11** characters in FAT32 type, **32** characters in NTFS type.

7. Partition Type

You can select MBR or GPT.

8. Capacity Check

Check HDD capacity.

9. W/R Test:

MP tool will Write, Read and compare test file on HDD.

The limit size of test pattern file is 180MB.

The file name of test pattern is "rwtest.bin".

10. Speed Test:

Test for device read/write speed.

11. Preload Files:

MP tool will copy the files to the HDD.



12. Auto Safe remove after ?? second:

this function will auto safely remove after a few second after MP operation success.


ASMedia Confidential

Area C: Status and Results

Port#	Status	VID	PID	Serial Number	FW Version	Capacity	Update	ReLink	Partition	R/W Test	Preload
0	SUPER	174C	55AA	00000000009C	141126a10000	931 GB					
1											
2											
3											
4											
5											
6											
7											
8											
9											

Pass	Fail	Total
0	0	0



Progress Bar

0%

ASM105xMPTool will show basic information such as Port Number, Status, PID, VID, Serial Number, FW Version and Capacity and test results.

Area D: Mode select



Lock Mode:

Initially, ASM105xMPTool work in Lock Mode. It will load INI file and ready to run.

Unlock Mode:

If you want to enter into Unlock Mode, you must key in password. Password is "asmedia". When you are in Unlock Mode, you can modify Device Configuration, Device Function, Device Firmware, clean test result and save INI.

Password is **"asmedia"**

Operation Procedure:

ASM105xMPTool will auto load configuration from "as_mp_tool v0.5.ini". You can edit "as_mp_tool v0.5.ini" by notepad or other edit tool. Please refer to Appendix A.

The standard Operation Procedure is described as followed.

--

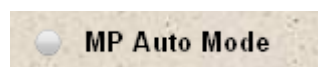
Step1. Please open ASM105xMPTool and press Unlock button to modify setting.

Step2. ASM105xMPTool will show Login Dialog. Please key in "asmedia".

Step3. You can modify configuration or clean test result.

Step4. Check test configuration items when you begin to test.

Manual Mode

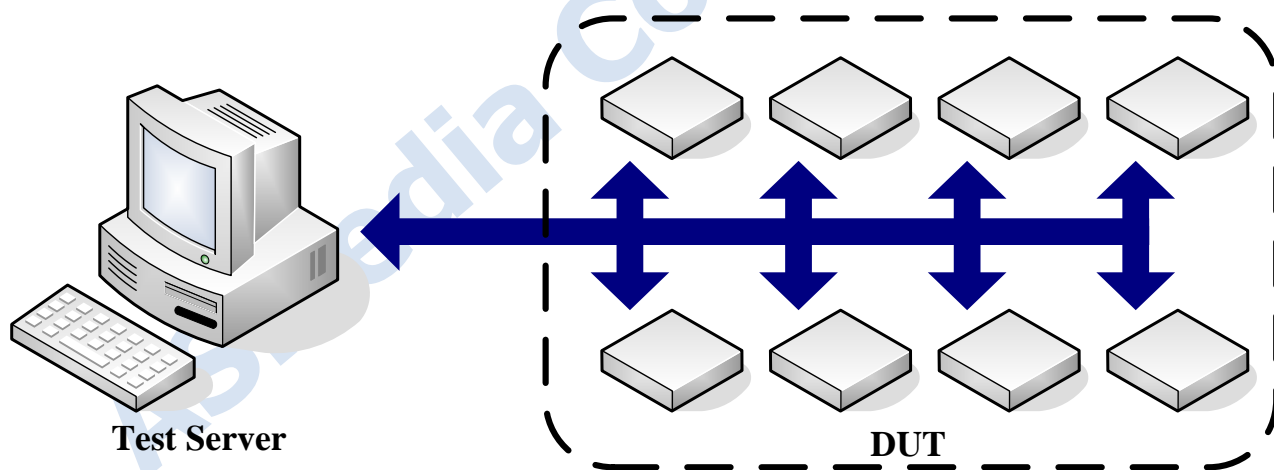


If MP Auto Mode item is not selected, ASM105xMPTool will run in Manual Mode.

In Manual Mode, It support Max 16 DUT to test at the same time.

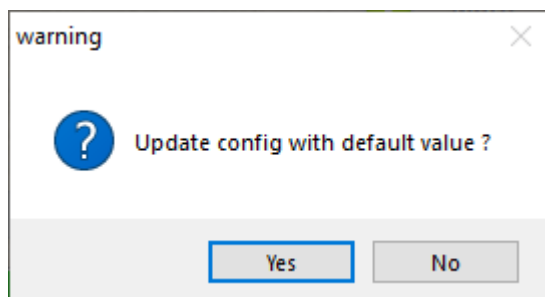
All of USB2.0/3.0 Port **can't** connect any other **Mass Storage Device** on test server.

1.1 Connect DUT to platform.



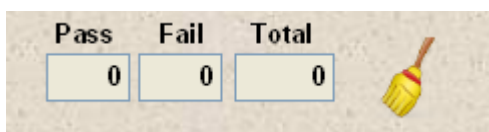
1.2 Press **start** in bottom left.

1.2.1 if user didn't change the default config setting, tool will pop-up warning msg box.



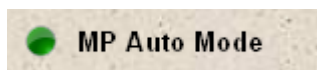
It is not recommended to use default value for config setting.

- 1.3 The progress can be monitored from Progress Bar or % in bottom right.
- 1.4 When the test is finished, users can see pass count, fail count and total count in the screen.



- 1.5 Press safely Remove and change next DUT
- 1.6 ASM105xMPTool will save the test result in file named "YYYYMMDD.log"

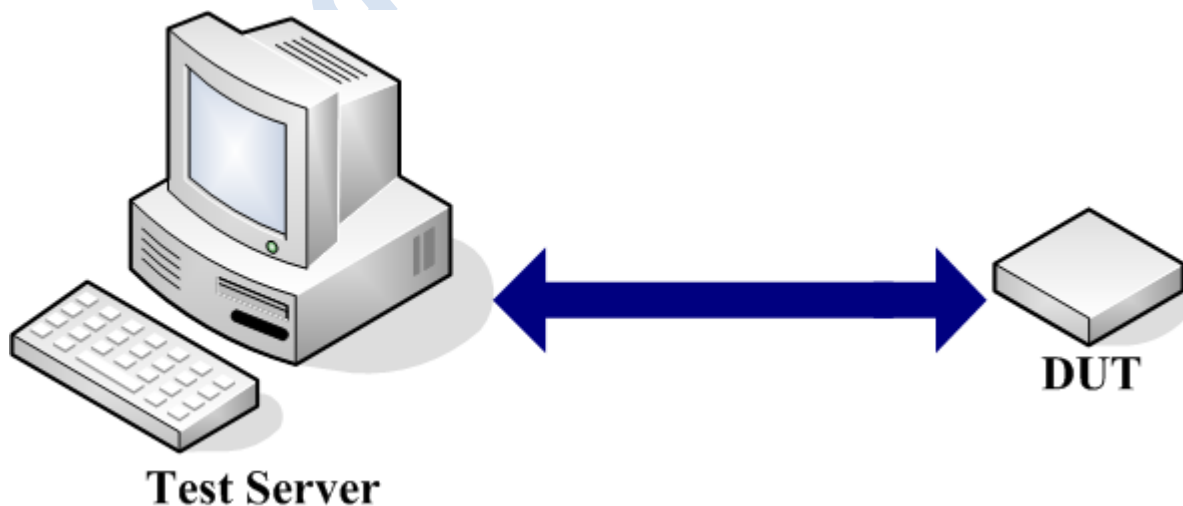
Auto Mode



If MP Auto Mode is selected, ASM105xMPTool will run in Auto Mode.

In Auto Mode, All of USB2.0/3.0 Port **can't** connect any other **Mass Storage Device** on test server.

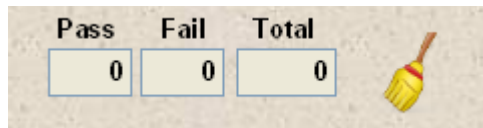
- 2.1 Plug DUT to USB port, after entered MPtool window.



- 2.2 ASM105xMPTool will automatically test when the usb device is plugged into test server.

ASM105x MP Tool User manual

- 2.3 You can monitor the progress through Progress Bar or % in bottom right.
- 2.4 When the test is finished, users can see pass count, fail count and total count in the screen.



- 2.5 Press safely remove and change next DUT
- 2.6 ASM105xMPTool will save the test result in file named "YYYYMMDD.log"

ASMedia Confidential

Appendix A:

INI file Description:

=====INI file Start=====

INI file Description:

[usb_func]

format_enable=0	//0: Disable; 1: Enable Format disk
format_drive_type=0	//0: NTFS; 1: FAT32; 2: exFAT
partition_drive_type=0	//0: MBR; 1:GPT
drive_label_name=NEW DISK	//Setup Disk label name
wr_test_enable=0	//0: Disable; 1: Enable Read/Write test
wr_test_binary_name=rwtest.bin	//File name for read/write test
wr_test_count=1	//Loop count for read/write test
auto_mp=0	//0: Disable; 1: Enable Auto MP mode
auto_mp_DevNum=1	//1~8: When Auto MP mode enable, determine how many devices plug-in will trigger MP process
preload_enable=0	//0: Disable; 1: Enable Preload load file
preload_folder_path=C:\test	//File folder path for preload
Check_USBStatus_enable=0	//0: Disable; 1: Enable Check USB status
Check_USBStatus=1	//0: USB2.0; 1: USB3.0; 2: USB3.1
Check_SerialNumber=0	//0: Disable; 1: Enable check input serial number is hex
Auto_Safe_Remove=0	//0: Disable; 1: Enable auto safe remove after MP process
Scan_BarCode=0	//this item is not used currently
Speed_test_enable=0	//0: Disable; 1: Enable read write speed test
Scan_HDDSN=0	//this item is not used currently
check_config=0	//0: Disable; 1: Enable check PID,VID,Manufacture string, Product string, and Serial number
HDDCapacityCheck=0	//0: Disable; 1: Enable HDD capacity check
HDDCapacity_Threshold=0	//the threshold of HDD capacity (unit: GB)
SN_EditType=1	//input serial number edit type: 0: user define; 1: Increase Hex; 2: Increase Dec; 3: serial number from barcode scanner; 4: serial number from HDD SN
port_mapping_enable=0	//0: Disable; 1: Enable port mapping feature, MP tool will assign different to every USB port, and display on Area:C

[usb_fw]

fw_enable=1 //0: Firmware update disable ; 1: Firmware update enable
 fw_binary_name=.\\120416_11_11_06.bin // Firmware file path for Firmware update
 fw_reload=1 //0: Device relink disable ; 1: Device relink enable
 rescan_after_relink=0 //Delay time for device rescan after relink(ms)
 ext_fw_enable=0 //Only for Asmedia internal test always set to 0
 pd_fw_enable=0 //Only for Asmedia internal test always set to 0
 mcu_fw_enable=0 //Only for Asmedia internal test always set to 0
 pd_binary_name= //Only for Asmedia internal test always set to NULL
 mcu_binary_name= //Only for Asmedia internal test always set to NULL

[usb_config]

config_format=1 //Always set to format 1
 vendor_id=174C //Setup for vender ID
 product_id=55AA //Setup for product ID
 device_revision=0100 //Setup for revision
 manufacturer_string=ASMT //Setup for manufacturer string
 product_string=ASMT105x //Setup for product string
 serial_number=AAAABBBB0001 //Setup for serial number, in USB specification, serial
 number shall contain 12 ~ 20 valid digits
 serial_number_increase=0 //0: Device serial number increase disable ;
 1: serial number increase enable
 serial_number_increase_HEX=0 //this item is not used currently
 serial_number_increase_DEC=0 //this item is not used currently
 SN_fix_length=0 //0~20: tool will check if input serial number's length is equal
 the setting before MP process
 SN_remain_value_enable=0 //0: Disable ; 1: Enable the serial number remain value length
 feature when SN_EditType = 1 or 2 (increase Hex or Dec)
 SN_remain_value_length=8 // if SN_EditType = 1 or 2, and SN_remain_value_enable = 1,
 MP tool will auto increase the serial number without the setting
 digits
 e.g. SN_EditType=1, serial_number=AABBCCDD0000,
 SN_remain_value_length=8, MP tool will keep the 8 digits
 value "AABBCCDD", and increase the last 4 digits, from 0000

standby_timer=0 //Only for Asmedia internal test always set to 0
hdd_standby=0 //Only for Asmedia internal test always set to 0
customized_string=0 //0: Disable ; 1: Enable T10 Manufactory and Product string
setting will the same as EP0 Manufactory and Product string
eup_enable=0 //Only for Asmedia internal test always set to 0
two_leds=0 //Only for Asmedia internal test always set to 0
U1U2=0 //Only for Asmedia internal test always set to 0
low_power_mode=0 //Only for Asmedia internal test always set to 0
2TB=0 //Only for Asmedia internal test always set to 0
image0=1 //Only for Asmedia internal test always set to 1
image1=0 //Only for Asmedia internal test always set to 0
crc32=0 //Only for Asmedia internal test always set to 0
slow_enumeration=0 //0: Disable ; 1: Enable linking USB after SATA device detected
Win8WTG=0 //Only for Asmedia internal test always set to 0
HDDPC=0 //Only for Asmedia internal test always set to 0
QD32=0 //Only for Asmedia internal test always set to 0

[usb_mode]
cd_rom_mode=0 //0: Disable; 1: Enable ODD device

[Target_Chip]
target_chip=0 //Only for Asmedia internal test always set to 0

=====INI file End=====

Appendix B:

MPTool in command line mode:

User can execute MP tool without GUI by using command line window

Currently available commands as below:

/? , /DBG, /S /S:YYMMDDAABBCC, /C:YYMMDDAABBCC, /L:xx

/?	//pop-up a message box, to show the available commands //e.g. ASM105xMPTool.exe /?
/DBG	//set the debug message level(0~4), it will display GUI and user can monitor the debug message by DebugView.exe(a windows tool to capture debug messages) //e.g. ASM105xMPTool.exe /DBG 4
/S	//execute the MP tool without GUI, tool setting depend on ini //e.g. ASM105xMPTool.exe /S
/S:YYMMDDAABBCC	//when ini setting fw_enable=1, MP tool will update serial number as YYMMDDAABBCC and FW //e.g. ASM105xMPTool.exe /S:AAAABBBBCCCC0001
/C:YYMMDDAABBCC	//check FW version if equal YYMMDDAABBCC //e.g. ASM105xMPTool.exe /C:170907D10000
/L:xx	//set LED status, x=0: off, x=1: on L:00-> LED1 and LED2 off, L:01->LED1 off LED2 on //e.g. ASM105xMPTool.exe /L:01