

CREATIVE TECHNOLOGY LTD

Sound Blaster Cinema

User Guide

Creative Worldwide OEM

1/29/2013

Table of Contents

Sound Blaster Cinema.....	3
System requirements.....	3
Software Installation or Un-installation.....	3
Configure Default Device	4
Software: Sound Blaster Cinema.....	5
Users Profile.....	5
SBX Pro Studio Master ON/OFF	5
Visualizer	6
Individual Feature Toggle.....	6
Volume Control / Mute.....	7
SBX Surround.....	8
SBX Crystalizer	8
SBX Bass	9
SBX Smart Volume	9
SBX Dialog Plus	10
Drop-down menu (Top Left) – Advanced Setting	11
Connectivity.....	15
2.1 channel analog speakers.....	15
5.1 channel analog speakers.....	16
7.1 channel analog speakers.....	17
Connecting Headphones	18
Positioning of Speakers.....	19
Troubleshooting and FAQs.....	20



Sound Blaster Cinema

A new member of the Sound Blaster family, Sound Blaster™ Cinema is designed to bring the same great audio experience found in live performances, films, and recording studios - to the PC.

Sound Blaster Cinema improves how you experience stereo and multi-channel soundtracks from a variety of sources, including DVDs, games, CDs, MP3s and even Blu-Ray.

Powered by the SBX Pro Studio technologies, the Sound Blaster Cinema delivers a much more realistic and immersive experience, conveniently placed in a central and intuitive console

The SBX Pro Studio suite of technologies features:

- SBX Surround™
- SBX Crystalizer™
- SBX Bass™
- SBX Dialog Plus™
- SBX Smart Volume™

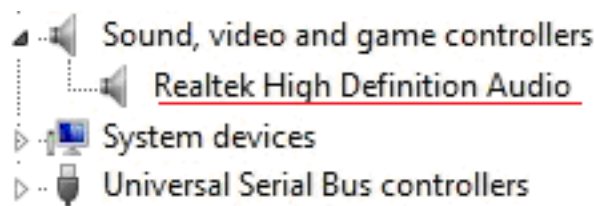
System requirements

Generally, you need the following requirements to run Sound Blaster Cinema :

- Windows 7 (32-bit)
- Windows 7 (64-bit)
- Windows 8 (32-bit)
- Windows 8 (64-bit)
- Supported HD-Audio codec
- Intel, AMD or 100% compatible motherboard

Software Installation or Un-installation

The Sound Blaster Cinema is pre-installed to the computer system as default bundled. The driver for the supported audio codec needs to be properly installed before the Sound Blaster Cinema application would work. User can verify the audio codec installation via Windows Device Manager. Example:



In the event when user needs to re-install Sound Blaster Cinema software, user has to check that there is no error listing such as “?” or “!” in the Device Manager before proceeding.

Note: Sound Blaster Cinema could be available from OEM’s web download while audio codec driver could be available from the OEM’s Recovery CD.

To un-install SB Cinema, simply access the Windows Control Panel and select the feature to un-install a program. Choose “Sound Blaster Cinema” and then click “Uninstall” to remove it. After removal, users can opt to re-install the software package.

Uninstall or change a program

To uninstall a program, select it from the list and then click Uninstall, Change, or Repair.

Organize ▾					
Name	Publisher	Installed On	Size	Version	
Borderlands 2	Gearbox Software	1/18/2013			
Deus Ex: Human Revolution	Eidos Montreal	1/17/2013			
Dishonored	Bethesda Softworks	1/17/2013		1.0	
Microsoft Visual C++ 2005 Redistributable	Microsoft Corporation	1/20/2013	2.68 MB	8.0.56336	
Microsoft Visual C++ 2005 Redistributable	Microsoft Corporation	1/20/2013	4.89 MB	8.0.59193	
Microsoft Visual C++ 2008 Redistributable - x64 9.0.30729.17	Microsoft Corporation	1/17/2013	13.2 MB	9.0.30729	
Microsoft Visual C++ 2008 Redistributable - x86 9.0.21022	Microsoft Corporation	1/18/2013	6.67 MB	9.0.21022	
Microsoft Visual C++ 2010 x86 Redistributable - 10.0.40219	Microsoft Corporation	1/20/2013	11.1 MB	10.0.40219	
NVIDIA PhysX	NVIDIA Corporation	1/17/2013	99.1 MB	9.11.1111	
Realtek High Definition Audio Driver	Realtek Semiconductor Corp.	1/16/2013		6.0.1.6652	
Sound Blaster Cinema	Creative Technology Limited	1/16/2013		1.00.00	

Configure Default Device

You may need to define playback device for the Sound Blaster Cinema especially under Windows 7 and Windows 8.

Simply access the Windows Control panel and select “Sound” to launch the configuration. Under “Playback” tab, make sure there is a green tick located at the connectivity where the playback output is intended to be.



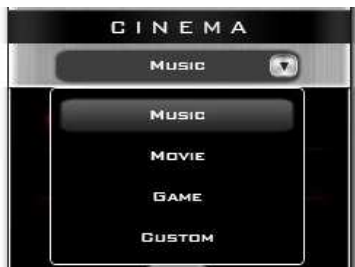
Software: Sound Blaster Cinema



Note: User could hover the (mouse) cursor over a button, slider or feature name on the panel, a tooltip will show, describing the particular function of that item.

User could click on each enhancement feature name (SURROUND, CRYSTALIZER, BASS, DIALOG PLUS or SMART VOLUME) to switch into particular feature view (Left Picture), for necessary setting controls.

Users Profile



Drop down list provides 3 different Profile based on end-user audio scenario

1. Music Listening
2. Movies Watching
3. Games Playing

A custom profile is available for end-user who would like to customize his/her profile. It will be automatically saved once application has exit.

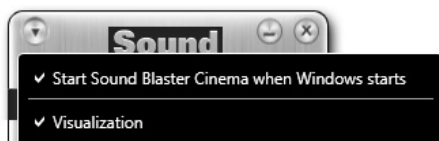
SBX Pro Studio Master ON/OFF



Click on the Master ON/OFF button to experience the full effect of SBX Pro Studio

For most systems with embedded speakers, the Master ON/OFF button will also activate our high-resolution linear phase EQ (This is to correct for poor frequency response in systems - Laptops, netbooks, AIO – with embedded speakers) which is fully customized for each system model.

Visualizer



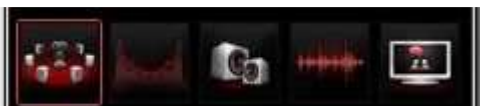
Click on the drop down list on the Top Left-Hand Corner to turn the visualization display ON/OFF

When unchecked (OFF), the last selected SBX Pro Studio feature will be displayed



Visualization is based on the audio level of the stereo audio source with the middle representing lower bass frequencies, & spreading out to the sides for higher frequencies.

Individual Feature Toggle



Click on the individual feature toggle on the bottom left to have control over the 5 SBX Pro Studio technologies – Surround, Crystalizer, Bass, Smart Volume, Dialog Plus



Click on the circles to turn ON/OFF the individual features. A tick will imply the selected feature is turned ON and vice-versa.



Control Slider

The Slider will be lighted up and ready for adjustment when the particular enhancement feature is turned on, User could drag the slider left or right to the desired level. It ranges from 0% to 100%, while bigger percentage indicates larger effect typically

Volume Control / Mute

Click on the Speaker ICON to mute & un-mute the Master Volume of the selected audio output device. Please refer to the section on "Drop-down menu (Top Left) – Advanced Setting" for the selection of audio output device

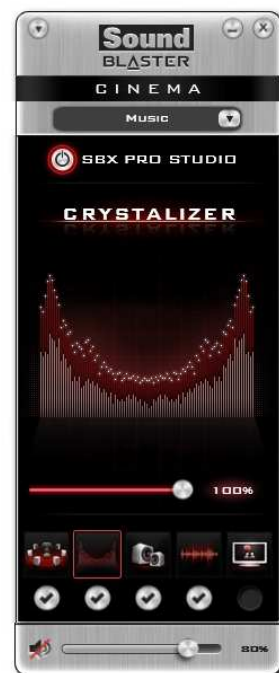
User could drag the slider left or right to the desired level of master audio volume for their selected audio output device. It ranges from 0% to 100% while bigger percentage indicates larger volume typically

SBX Surround

SBX Surround provides immersion control to enhance the natural sense of audio depth and spaciousness by creating virtual surround sound channels. Stereo content or multi-channel content played over stereo speakers and headphones will sound as if it's coming from all sides while voices remain centered in front and original balance and timbre is preserved.

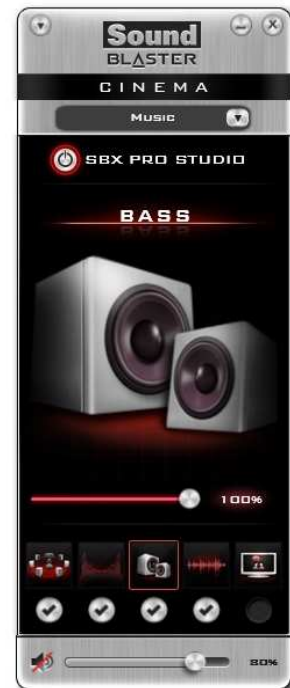
**SBX Crystalizer**

SBX Crystalizer restores the natural dynamic range that is lost when iTunes and MP3 music gets compressed. This makes the music sound as good as the artist originally intended, and adds an enhanced level of realism for movies and games.



SBX Bass

SBX Bass fills in the missing low frequency tones and gives the extra impact for a better entertainment experience. Consumers no longer have to tolerate lack of bass in speakers built into notebook PCs, 2.0 speakers or headphones, as SBX Pro Studio technology dramatically improves the sound experience without a subwoofer.

**SBX Smart Volume**

SBX Smart Volume addresses the problem of abrupt volume level changes during playback and between songs by automatically and continuously measuring volume, and intelligently applying gain and attenuation to compensate for those changes.

i) Loud Mode

Make small speakers (Esp. notebook, AIO) sounds BIG & maintains loudness at the maximum level at all times

ii) Night Mode

Tailors the experience for lower listening levels for when you need to not wake up others around you. It preserves audio details at quieter volume level



SBX Dialog Plus

SBX Dialog Plus enhances the voices in movies for clearer dialog, allowing the listener to hear the dialog over the rest of the soundtrack and over ambient noise in the listening environment.



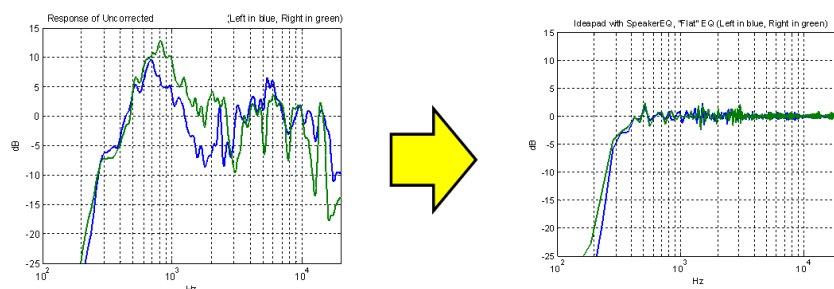
Drop-down menu (Top Left) – Advanced Setting

Click on the **Menu** button to start your advanced setting:



- 1) Check the first (top) option if you wish to automatically start Sound Blaster Cinema Settings when Windows starts; otherwise uncheck this option and launch the program manually from Windows Start Menu
- 2) Visualization - Check this if you wish to have Visualization to be active
- 3) Always On Top – Check this if you wish Sound Blaster Interface/Control to be always be the Top Window instead of getting hidden under other application windows
- 4) Settings - Selecting the headphones/speakers configuration for playback. For an optimized employment of SBX Pro Studio technologies (Esp. SBX Surround), the appropriate configuration (Built-in Speakers, Headphones, 5.1/7.1 Surround etc) needs to be selected
 - a) Select the appropriate configuration device from the drop down list. And click OK

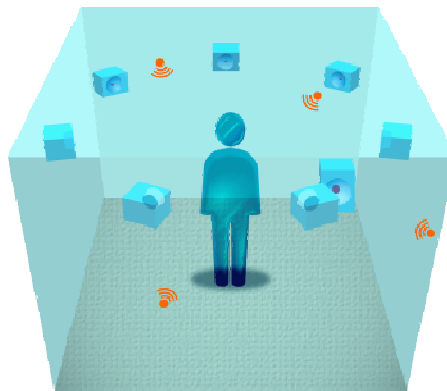
- i. **Built-In Speakers:** This option will only be available for systems with embedded speakers. Once selected, a specially tuned & customized high-resolution linear phase EQ used to correct for poor frequency response in systems - Laptops, netbooks, AIO - will be applied to the Built-in Speakers for a more ideal flatter response. Below picture is for illustration only.



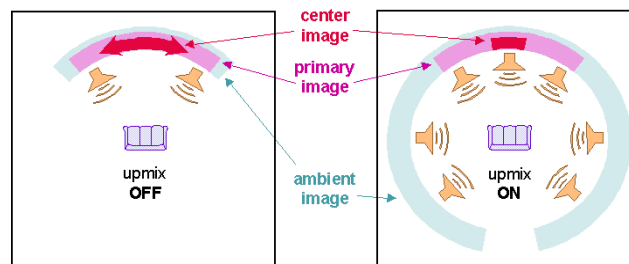
- ii. **Headphone :** Once selected, the Headphone Virtual Surround Algorithm will be applied to SBX Surround if it has been activated in the SB Cinema application



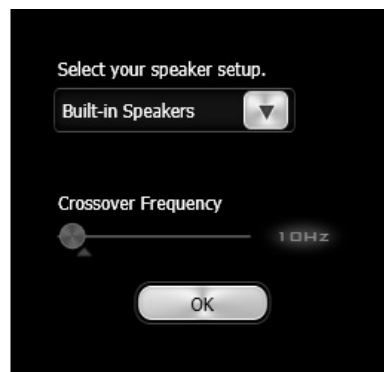
- iii. Stereo : Once selected, the Stereo Virtual Surround Algorithm will be applied to SBX Surround if it has been activated in the SB Cinema application



- iv. 5.1 or 7.1 Speakers : Once selected, Upmix Surround Algorithm will be applied to SBX Surround if it has been activated in the SB Cinema application. Upmix Surround Algorithm will take stereo audio content and upmix / fill-up the surrounding multi-channels



- b) Setting Crossover Frequency
- To set the Crossover Frequency of the selected output for the most appropriate and comfortable bass effect strength (Typical value for Headphone/Stereo speakers is at 80Hz)
 - Drag the slider left or right to the desired level. It ranges from 10Hz to 1000Hz, while smaller number indicates stronger bass effect strength. And click OK.



(“Built-in Speakers” is available only on notebooks and AIOs)

5) Restoring Default

To set the current audio device to the default state, click on the “Restore Default” option then click OK on the Windows dialog box.

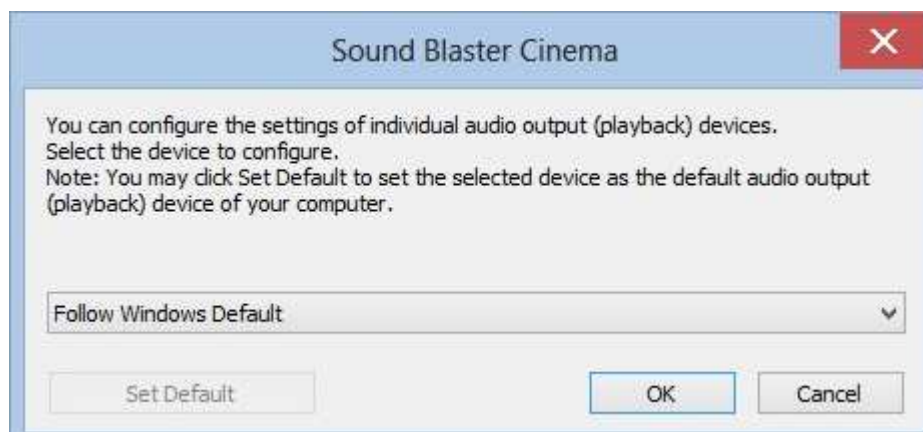


6) Selecting Audio Output (Playback) Device

To select the desired audio output (playback) device to apply the SBX Pro Studio effects. Click on the “Audio Device Selection” option and select the desired output device from the drop down list. And click OK.

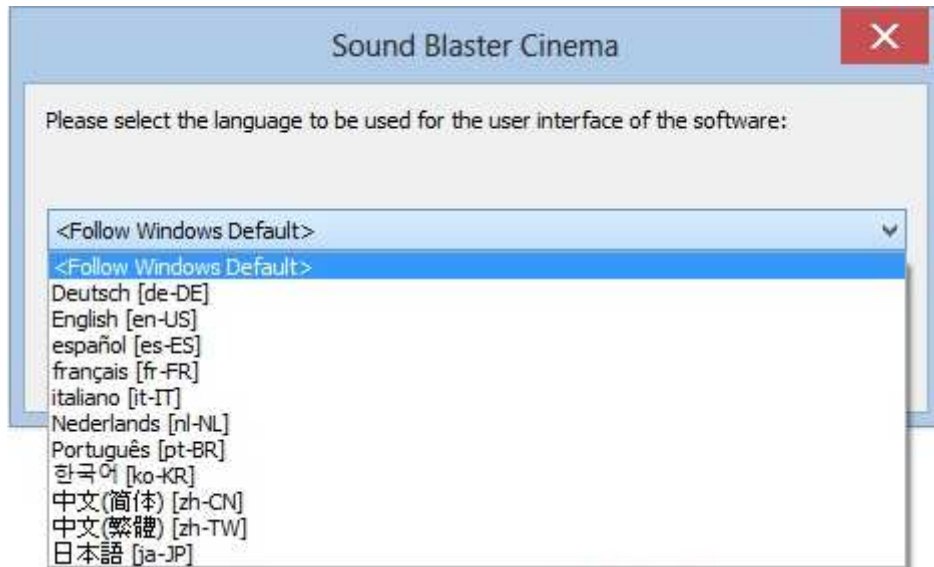
“Follow Windows Default” is to follow the windows default audio device

End-user may click on set default if they would like the selected device as the default audio output device of your system



7) Changing Software Display Language

To change into the desired display language of this program. Click on the “Software Language Selection” option. Choose the desired language from the drop down list of eleven supported languages. And follow the instructions on the screen to complete the change.



8) About Sound Blaster Cinema

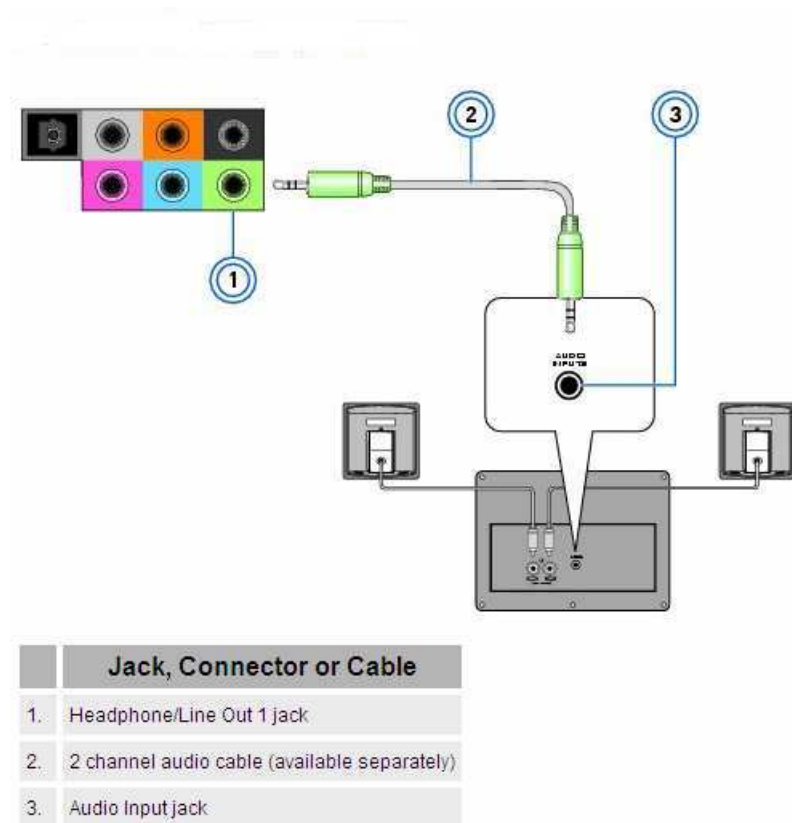
The About Box shows the version number of the Sound Blaster Cinema Application. Click on OK on the dialog box to close it.



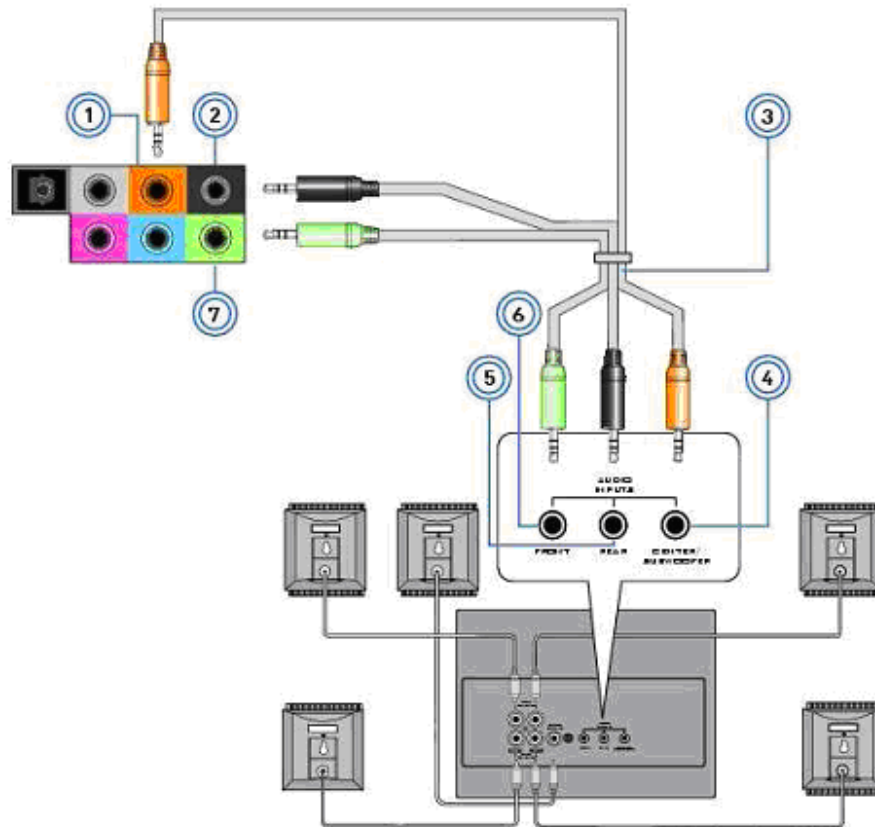
Connectivity

The following pictures illustrate how to connect computer system to headphones, analog speaker systems, home theater systems and other external devices. The jacks on the DELL system may vary from the pictures shown here.

2.1 channel analog speakers

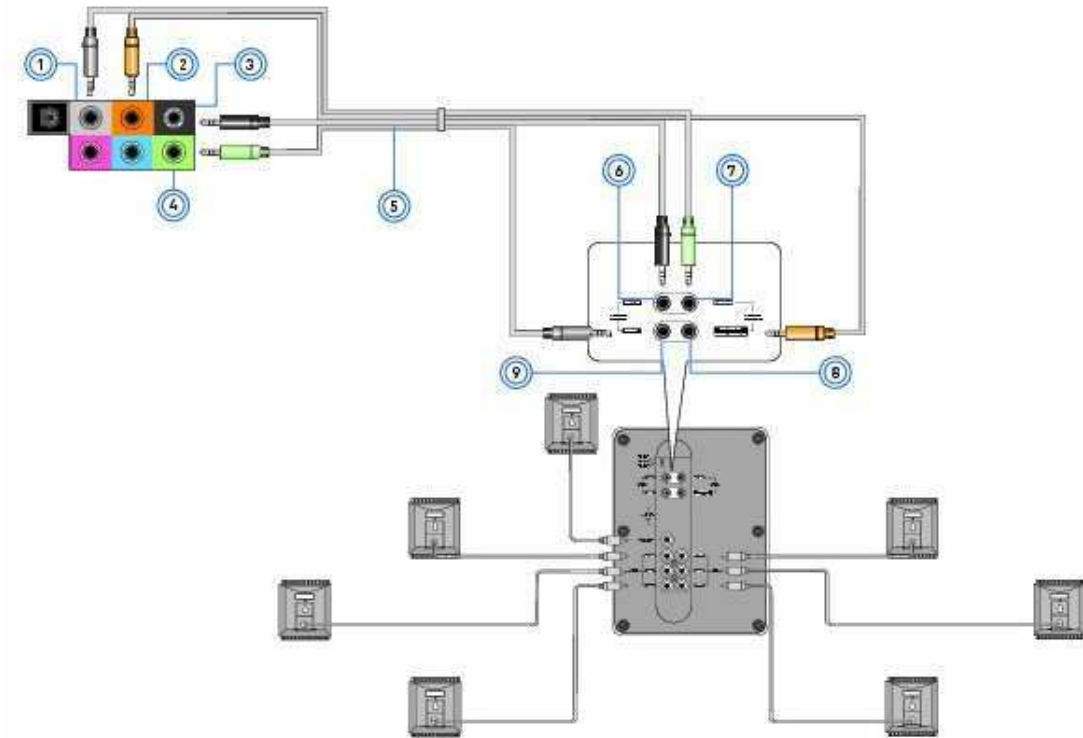


5.1 channel analog speakers



	Jack, Connector or Cable
1.	Line Out 3 jack
2.	Line Out 4 jack
3.	5.1 channel audio cable (available separately)
4.	Center/Subwoofer (Audio Input) jack
5.	Rear (Audio Input) jack
6.	Front (Audio Input) jack
7.	Headphone/Line Out 1 jack

7.1 channel analog speakers



	Jack, Connector or Cable
1.	Line Out 2 jack
2.	Line Out 3 jack
3.	Line Out 4 jack
4.	Headphone/Line Out 1 jack
5.	7.1 channel audio cable (available separately)
6.	Rear (Audio Input) jack
7.	Front (Audio Input) jack
8.	Center/Subwoofer (Audio Input) jack
9.	Side (Audio Input) jack

Connecting Headphones

Do not listen to audio on your headphones at high volumes for prolonged periods of time as hearing loss may result.

For headphones:

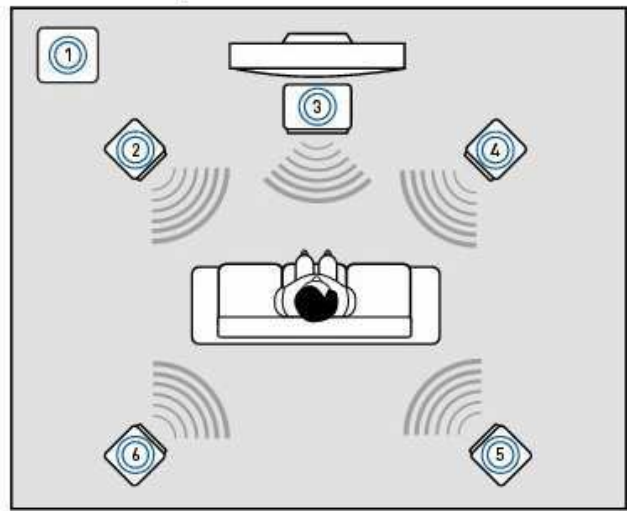


	Jack or Connector	Description
1.	Headphone/Line Out 1 jack	Connects to stereo headphones with a 3.50 mm (1/8-inch) plug.

Positioning of Speakers

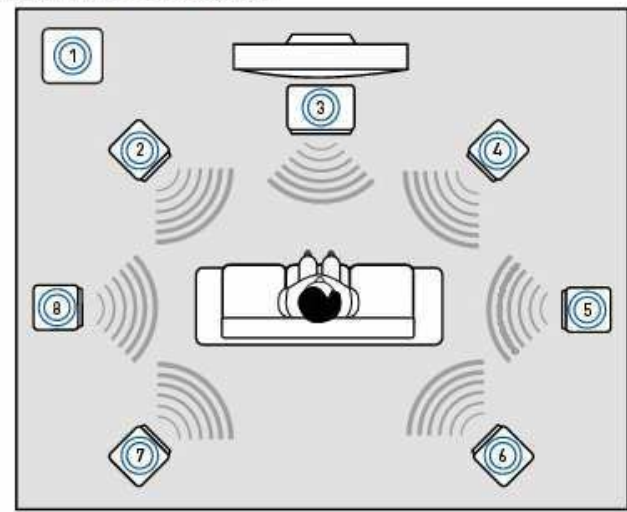
Good speaker placement is crucial to getting optimal performance from your audio system and achieving an enhanced listening experience. Below are our recommendations for 5.1 and 7.1 channel speakers.

For 5.1 channel speakers:



	Speaker component
1.	Subwoofer
2.	Front Left
3.	Front Center
4.	Front Right
5.	Rear Right
6.	Rear Left

For 7.1 channel speakers:



	Speaker component
1.	Subwoofer
2.	Front Left
3.	Front Center
4.	Front Right
5.	Side Right
6.	Rear Right
7.	Rear Left
8.	Side Left

Troubleshooting and FAQs

1. No sound from the headphones.

Check the following:

- The headphones are connected to the motherboard's Headphone jack.
- The motherboard's Headphone jack has been selected as the Windows default playback device.
- The related sound level is turned on and set to mid-range.

2. No sound from the speakers.

Check the following:

- The speakers are connected to the motherboard's output jacks.
- No headphones are connected to the Headphone jack located on your computer's front panel.
- The speakers are turned on and functioning properly.
- The motherboard's Output jack has been selected as the Windows default playback device.
- The related sound level is turned on and set to mid-range.

3. No audio output when playing digital files such as .wav, MIDI files or AVI clips.

Check the following:

- The powered speakers or external amplifier are connected to the motherboard's Line Out jacks.
- The powered speakers' or external amplifier's volume control knob, if any, is set at mid-range.
- The motherboard's Line Out jack has been selected as the Windows default playback device.
- The related sound level is turned on and set to mid-range.

4. When Sound Blaster Cinema is launched, UI is gray and all features are not accessible.

Check the following:

- The driver for the supported audio codec is the correct version which supports Sound Blaster Cinema.
- The driver for the supported audio codec is installed correctly.